

# Bookcase Cabinet



## Product overview

The Dexion Strata 2 Bookcase can be effortlessly converted to a Dexion Strata 2 Tambour Door Cabinet or Swing Door Cabinet, should the office require a secure cabinet with doors. The Dexion Strata 2 Bookcase is GECA Certified.

## Key features and benefits

- Achieve maximum storage capacity across a range of cabinet sizes incorporating fully adjustable shelves.
- Durable powder coat finish with options such as texture and satin.
- Made from 100% recyclable sheet steel under ISO14001 EMS certification.
- Levelling feet as standard and adjustable from the base inside the unit.
- Optional lockable heavy duty castors (height restrictions may apply).
- Wide variety of accessories available and interchangeable across Dexion products.
- Complimentary matching planter box range.
- Shelves available in Stone White or to match cabinet finish.
- GECA Certified.

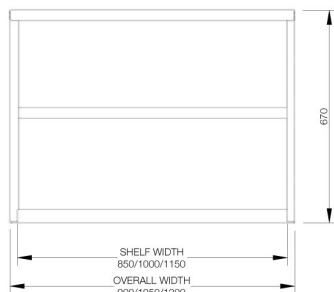
## Accessories

- Shelf – slotted
- Shelf – plain
- Shelf – fineline
- Divider – binning
- Divider – slotted shelf
- Divider – wrap around
- Filing rack – suspended
- Filing rack – wrap around
- Hanging file chassis
- Coat rail
- Roll out – file frame
- Roll out – media drawer
- Roll out – reference shelf
- Bins – on shelf

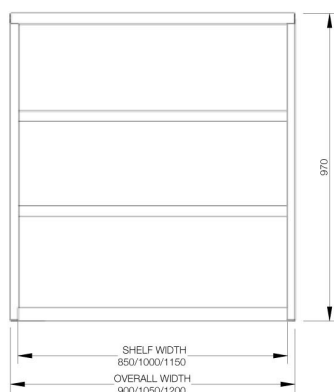


# Bookcase Cabinet

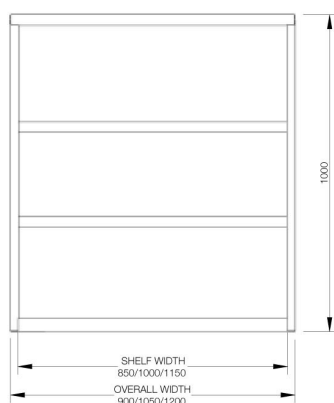
## Technical specifications



2 Tier Bookcase 670 H		
Overall Height	Overall Width	Overall Depth
670mm	900mm	460mm
670mm	1050mm	460mm
670mm	1200mm	460mm



3 Tier Bookcase 970 H		
Overall Height	Overall Width	Overall Depth
970mm	900mm	460mm
970mm	1050mm	460mm
970mm	1200mm	460mm

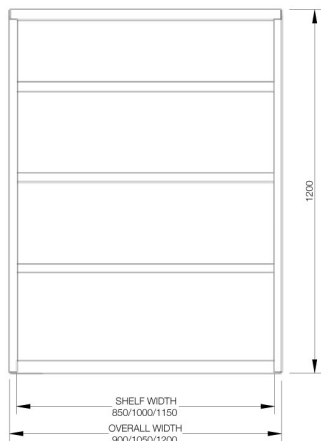


3 Tier Bookcase 1000 H		
Overall Height	Overall Width	Overall Depth
1000mm	900mm	460mm
1000mm	1050mm	460mm
1000mm	1200mm	460mm

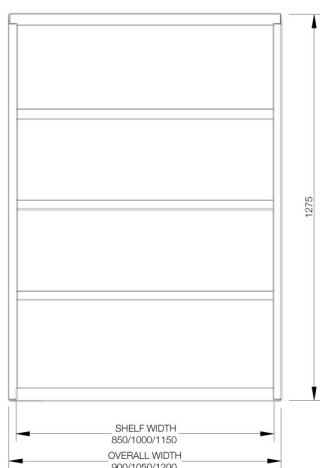


# Bookcase Cabinet

## Technical specifications



4 Tier Bookcase 1200 H		
Overall Height	Overall Width	Overall Depth
1200mm	900mm	460mm
1200mm	1050mm	460mm
1200mm	1200mm	460mm



4 Tier Bookcase 1275 H		
Overall Height	Overall Width	Overall Depth
1275mm	900mm	460mm
1275mm	1050mm	460mm
1275mm	1200mm	460mm

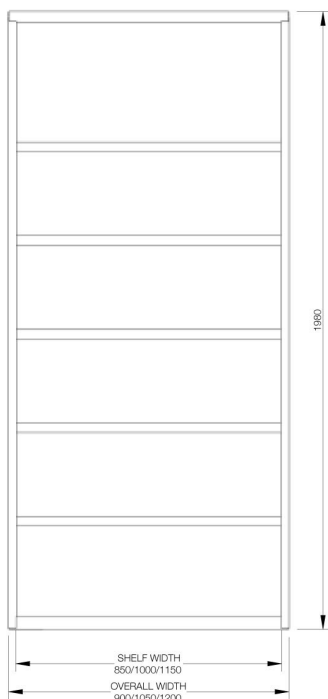


# Bookcase Cabinet

## Technical specifications



5 Tier Bookcase 1650 H		
Overall Height	Overall Width	Overall Depth
1650mm	900mm	460mm
1650mm	1050mm	460mm
1650mm	1200mm	460mm

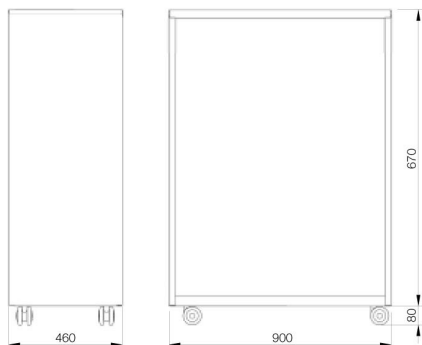


6 Tier Bookcase 1980 H		
Overall Height	Overall Width	Overall Depth
1980mm	900mm	460mm
1980mm	1050mm	460mm
1980mm	1200mm	460mm

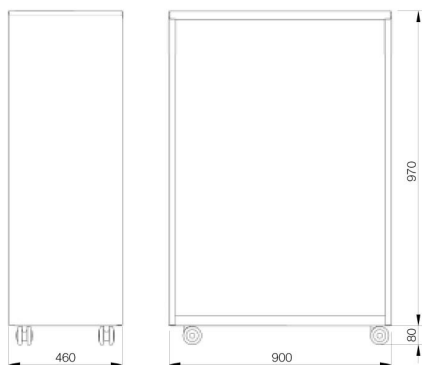


# Bookcase Cabinet

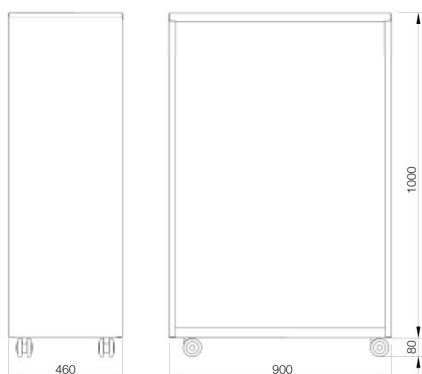
## Technical specifications



2 Tier Bookcase with Castors 750 H		
Overall Height	Overall Width	Overall Depth
750mm	900mm	460mm
750mm	1050mm	460mm
750mm	1200mm	460mm



3 Tier Bookcase with Castors 1050 H		
Overall Height	Overall Width	Overall Depth
1050mm	900mm	460mm
1050mm	1050mm	460mm
1050mm	1200mm	460mm



3 Tier Bookcase with Castors 1080 H		
Overall Height	Overall Width	Overall Depth
1080mm	900mm	460mm
1080mm	1050mm	460mm
1080mm	1200mm	460mm



# Bookcase Cabinet

Accessory Type	Width	Depth	Height	Capacity (UDL)	Colour
FineLine Shelf	850mm	400mm	16mm	45KG	SW
FineLine Shelf	1000mm	400mm	16mm	45KG	SW
FineLine Shelf	1180mm	400mm	16mm	45KG	SW
Plain Shelf	850mm	400mm	30mm	130KG	SW
Plain Shelf	1000mm	400mm	30mm	80KG	SW
Plain Shelf	1150mm	400mm	30mm	80KG	SW
Slotted Shelf	850mm	400mm	30mm	130KG	SW
Slotted Shelf	1000mm	400mm	30mm	80KG	SW
Slotted Shelf	1150mm	400mm	30mm	80KG	SW
Shelf Clip	-	-	-	-	Zinc

Note: Shelves and shelf clips sold separately to cabinets. Shelves available in Stone White or to match cabinet colour.  
Key: - UDL: Uniformly distributed load, SW: Stone white.

## Made to order - Non standard colours

Cabinets are available in all standard Interpon powdercoat colours.

## Planter integration

Dexion Strata 2 Planter boxes are designed specifically for integration with the Strata 2 cabinet range. Planter boxes and cabinets are designed to align with standard heights in the cabinet range producing clean, consistent lines.

Please note: the recommended maximum height combination should not exceed 1430mm. The maximum height is achieved by using a 1200mm high cabinet with a standard 230mm planter box. Planter boxes accept 200mm diameter pots.

