

# Gravity Conveyors

## Standard & Custom Conveyor Systems



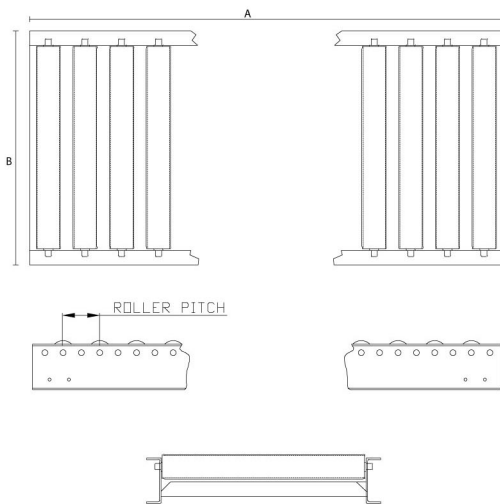
Gravity roller conveyors provide essential material handling free moving, efficient and safe transportation of goods at any operational stage of a conveyor line on a daily basis.

Gravity roller conveyors are an economical solution ideal for moving heavy and non standard shaped items along processing and packaging lines. Providing flexibility with innovative interlocking sections supplied as standard in 1.5 and 3m sections allowing for addition and subtraction of a conveyor line as required.

Adelaide Shelving's Conveyors have been designed with thicker channeling, stronger cross members and a high quality powder coated finish for hard wearing and maximum rigidity over the full length of any hard working conveyor line.

It is recommended that there be a minimum of three rollers under the goods to be transported at any one time. The size of the object being transported can help determine the roller pitch on your conveyor system applying the three roller rule.

Adelaide Shelving can custom manufacture gravity conveyor systems to suit your length, width, pitch and roller requirement.



**ROLLER SITS ABOVE CHANNEL**  
**STEEL ROLLER 50MM DIAMETER**  
**NYLON ROLLER 48MM DIAMETER**

## Specification

Model Number	Length (mm) (A)	Pitch (mm)	Overall Width (mm) (B)	Number of Rollers	Roller Material
<b>CGR070</b>	1500	75	290	20	Steel
<b>CGR071</b>	1500	75	290	20	Nylon
<b>CGR069</b>	1500	115	290	13	Steel
<b>CGR072</b>	1500	115	290	13	Nylon
<b>CGR073</b>	1500	150	290	10	Steel
<b>CGR074</b>	1500	150	290	10	Nylon
<b>CGR075</b>	3000	75	290	40	Steel
<b>CGR076</b>	3000	75	290	40	Nylon
<b>CGR077</b>	3000	115	290	26	Steel
<b>CGR078</b>	3000	115	290	26	Nylon
<b>CGR079</b>	3000	150	290	20	Steel
<b>CGR080</b>	3000	150	290	20	Nylon
<b>CGR081</b>	1500	75	450	20	Steel
<b>CGR082</b>	1500	75	450	20	Nylon
<b>CGR083</b>	1500	115	450	13	Steel
<b>CGR084</b>	1500	115	450	13	Nylon
<b>CGR085</b>	1500	150	450	10	Steel
<b>CGR086</b>	1500	150	450	10	Nylon
<b>CGR087</b>	3000	75	450	40	Steel
<b>CGR088</b>	3000	75	450	40	Nylon
<b>CGR089</b>	3000	115	450	26	Steel
<b>CGR090</b>	3000	115	450	26	Nylon
<b>CGR091</b>	3000	150	450	20	Steel
<b>CGR068</b>	3000	150	450	20	Nylon
<b>CGR092</b>	1500	75	600	20	Steel
<b>CGR093</b>	1500	75	600	20	Nylon
<b>CGR094</b>	1500	115	600	13	Steel
<b>CGR095</b>	1500	115	600	13	Nylon
<b>CGR096</b>	1500	150	600	10	Steel
<b>CGR097</b>	1500	150	600	10	Nylon
<b>CGR098</b>	3000	75	600	40	Steel
<b>CGR099</b>	3000	75	600	40	Nylon
<b>CGR100</b>	3000	115	600	26	Steel
<b>CGR101</b>	3000	115	600	26	Nylon
<b>CGR102</b>	3000	150	600	20	Steel
<b>CGR103</b>	3000	150	600	20	Nylon

