

Adelaide Shelving Product Catalogue

Product Range - Warehouse



warehouse

Components	6 – 7
Components Testing	8 – 9
Pallet Racking	
Selective racking	10
Narrow aisle racking	11
Double deep racking	12
Push back racking	13
Drive-in racking	14
Cantilever racking	15
ASRS & Satellite racking	16 – 17
Warehouse services	18 – 19
Racking accessories	20 - 22
Storeganizer	22
Racking protection	23
Carton live storage	24 – 25
Raised storage areas	
Customised steel	26
Rack supported	27
Ultima HI-280	28 - 29
Conveyors	30 - 31
Vertical carousels	32 – 35

Upright.
Uprights come in a galvanised or painted finish and bring all the rigour and safety of AS4084 and EN standard compliance. Uprights are made with high strength steel providing maximum strength and structural robustness.

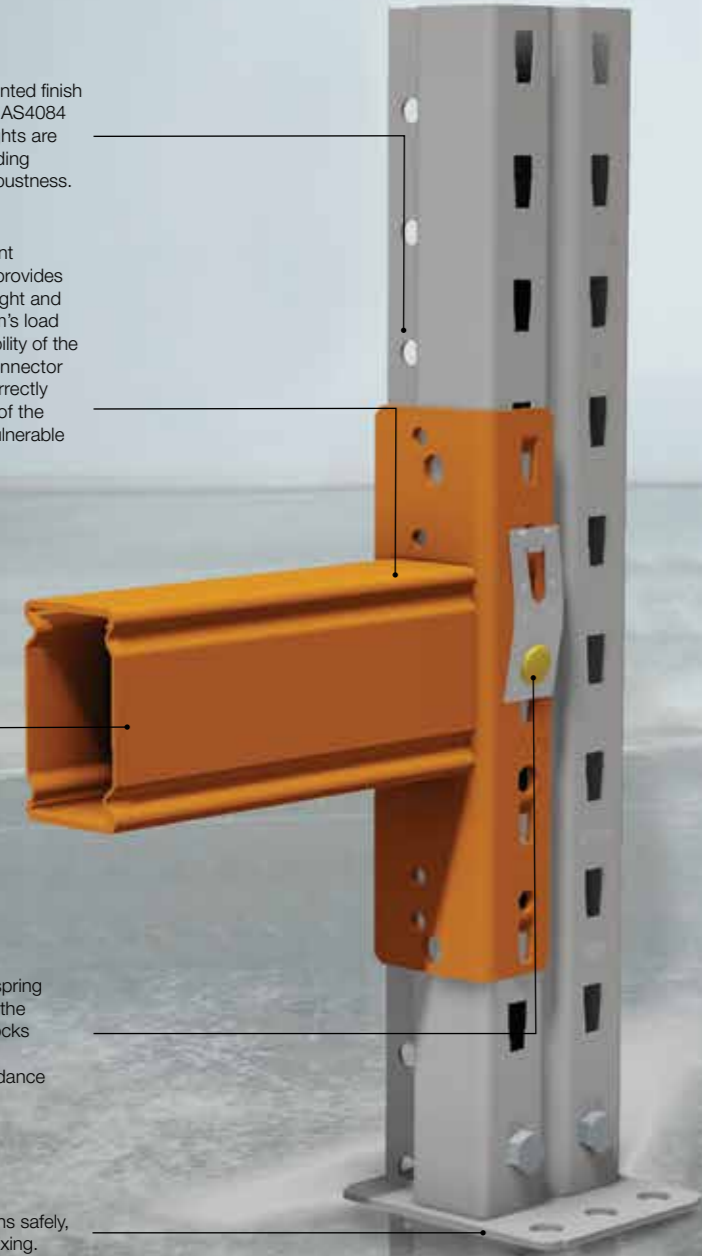
Connector.
All beams are provided with five point connectors. Five point connectivity provides increased stiffness between the upright and the beam, which increases the beam's load carrying capacity and the lateral stability of the rack structure. The design of the connector ensures that the beam loads are correctly dissipated vertically down the front of the upright ensuring the upright is not vulnerable to potential damage by lateral load.

Box Beam.
Our market leading box beams are made from two identical channel sections nested together to form a box.

This protects your box beam at the point where it receives the most punishment from truck forks and laden pallets. Instead of a conventional design, which is weak where it's most likely to be hit, the Speedlock Box beam has two 'C' sections interlocked over the length of the beam, forming a double skin at the top and the bottom. It's strongest where it's needed most.

Safety Lock.
Fitted as standard, safety locks are spring loaded and lock automatically when the connector clicks into place. Safety locks prevent the beam from accidentally being dislodged. Uplift load in accordance with AS4084.

Baseplate.
Baseplates meet all loading conditions safely, providing suitable floor loading and fixing.



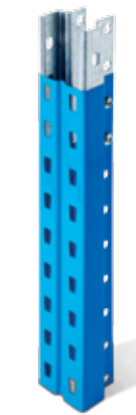
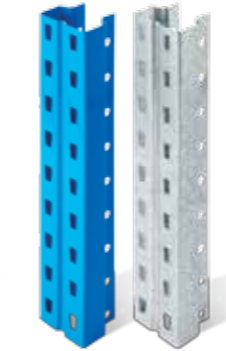
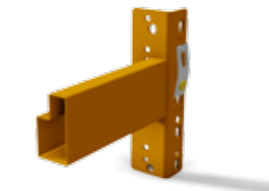
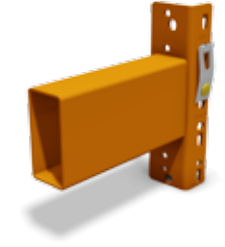
Components so smart they've been to university.

Each component in the Dexion range has been designed and independently tested for, AS4084 and EN compliance at the Faculty of Civil Engineering at the University of Technology, Sydney (UTS), Australia. UTS have conducted over 1000 tests on Dexion's racking components to determine their material properties. The results of these tests are

evaluated by Dexion engineers to determine the structural performance of the components. The thoroughness of these testing procedures ensures Dexion components perform to their stated loads. This provides peace-of-mind in quality components which have been put to the test before they reach the distribution centre floor.



Design versatility and class-leading carrying capacity.



90S upright.

90M / 90H upright.

100H upright.

100E / 100RF upright.

120M upright.

Splice to connect 90mm uprights.

warehouse products



Certification letter for Dexion's 2011 tests

RE: Testing of Dexion Components

To whom it may concern,

Industrial racking components supplied by Dexion have been the subject of extensive testing for structural strength and serviceability. These tests were carried out at the Materials and Structural Testing Laboratories of the University of Technology, Sydney.

Over 950 tests were conducted on Dexion's Australian, Malaysian and Chinese manufactured components. The tests conducted were:

- 1) Material tensile tests
- 2) Stub column compression test
- 3) Compression test upon uprights (checking for the effects of distortional buckling)
- 4) Bending tests on beam end connectors (Cantilever test)
- 5) Looseness tests on beam end connects
- 6) Shear tests on beam end connectors
- 7) Test on floor connections
- 8) Tests for the shear stiffness of upright frames
- 9) Test on upright splices

All tests were successfully conducted in compliance with the requirements of the European Standard EN 15512:2009 'Steel static storage systems - Adjustable pallet racking systems - Principles for structural design'. The tests were also prepared in accordance with the then available 2011 draft of the Australian Standard DR AS4084 'Steel storage racking' and are in compliance with the requirements of the recently published edition AS4084:2012 'Steel storage racking'.

Dr Ali Saleh
School of Civil and Environmental Engineering
Materials and Structural Testing Laboratories
University of Technology, Sydney
26 June 2012

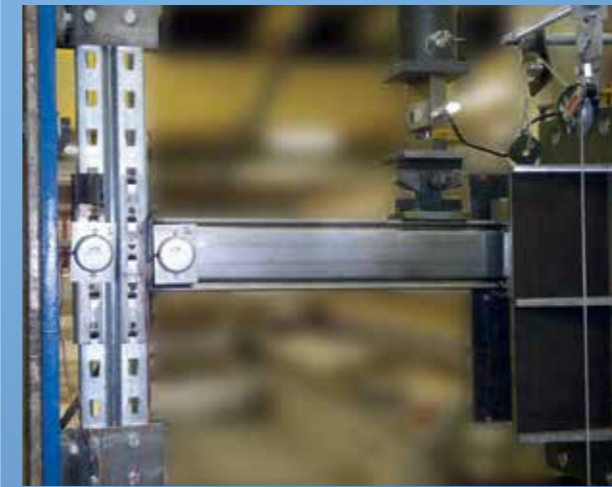
accessUTS Pty Limited
PO BOX 123
Broadway NSW 2007 Australia
Tel +61 2 9514 1916 Fax +61 2 9514 1433
ABN 55 098 424 312

accessUTS is a controlled entity of the University of Technology, Sydney

Components tried and tested for AS4084:2012 and EN15512:2009 compliance.

During a 6 month period, extensive independent testing was conducted on Speedlock components. Over 1000 tests were conducted to determine the material properties of Dexion's components. The results of these tests are evaluated by Dexion's engineers to determine the structural performance of the components. The following tests were conducted.

**TEST:
BEAM END CONNECTORS.**



This test measures bending capacity and rotation of the beam/upright connection. It also measures shear strength of the connector and connector lock and obtains a value of the looseness of the connection to inform the design calculation.

**TEST:
UPRIGHT STUB COLUMN.**



Stub column tests are used to help determine the ultimate strength of the uprights.

**TEST:
UPRIGHT SPLICE.**



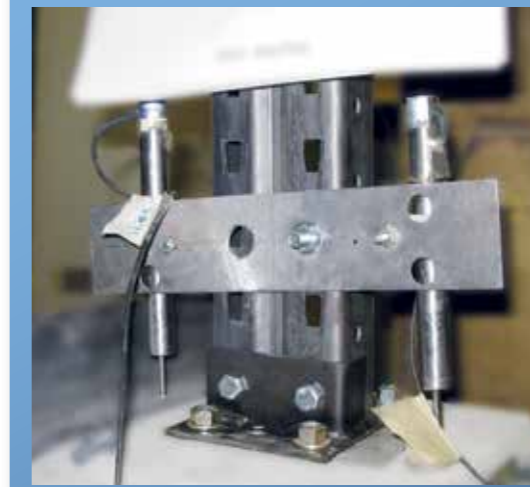
Determines the stiffness and strength of splices between upright sections.

**TEST:
UPRIGHT LONG COLUMN.**



The long column tests determine the axial load capacity of the upright taking into account the influence of buckling.

**TEST:
BASEPLATE.**



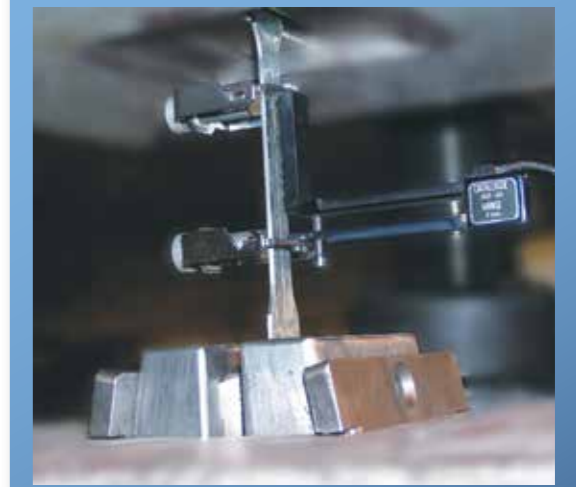
Measures the moment-rotation characteristics of the connection between the upright and the floor across a range of axial loads up to the maximum design strength of the upright.

**TEST:
FRAME SHEAR STIFFNESS.**



The frame shear stiffness test determines transverse shear stiffness per unit length of upright frame to assess the stability and shear strength of the frame.

**TEST:
TENSILE.**



The tensile test determines the strength of the steel ensuring the accuracy of calculations.



Access all pallets all the time.

Selective racking.



Your need:

You have lots of products going to lots of places. Orders are complex, with a mix of SKUs. Ready access is a must, low cost a plus.

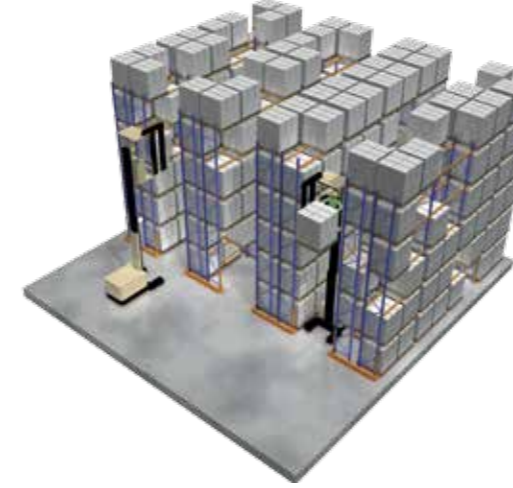
Our solution:

Selective pallet racking is very cost-efficient, offering you high capacity with easy access. Simple to install and customise, being infinitely adjustable. Serviced by conventional forklifts.

Vital statistics:

Average locations used	95%
Immediate accessibility	100%
Stock rotation	Good
Average floor area by pallet position (sqm)	0.85

Narrow aisle racking.



Your need:

Space is at a premium and you have many SKUs. Your orders are complex and varied, and you need high-density storage. Though turn-around times aren't critical, you need quick access to everything.

Our solution:

Maximise your floor area and roof height. Gives you direct access to every pallet. Serviced by special forklift trucks.

Vital statistics:

Average locations used	95%
Immediate accessibility	100%
Stock rotation	Good
Average floor area by pallet position (sqm)	0.45



Minimise aisle. Maximise space.

Warehouse products



Big orders dispatched fast.

Double deep racking.



Your need:

Not a lot of products, but distributed in high volumes. Maybe you make them yourself. The same SKUs are in groups of pallets before dispatch.

Our solution:

Stores up to four pallets deep, for quick dispatch of big, single-SKU orders. Double-entry aisle allows unbeatable access by dual pantograph or sliding fork attachments. Upper levels can be fitted with helpful guide rails.

Vital statistics:	
Average locations used	88%
Immediate accessibility	50%
Stock rotation	Average
Average floor area by pallet position (sqm)	0.60

Push back racking.



Your need:

You require maximum storage density, you are not concerned about stock rotation and you have large batches of the same SKUs. You are looking for operating efficiencies and are safety-focused. Pallet access is arranged on a Last In, First Out basis.

Our solution:

Push back racking combines high-density storage with high-speed access by conventional forklift trucks. Pallets may be safely stored 2 to 6 deep. Pallets are gravity fed ensuring the pick face is constantly filled.

Vital statistics:	
Average locations used	80%
Immediate accessibility	Up to 100%
Stock rotation	Average
Average floor area by pallet position (sqm)	0.55



Last in first out.

warehouse products



Drive-in racking.



Your need:

Only a few SKUs, but many pallets. Space efficiency and low cost are critical, and you may need cold storage. First In, First Out isn't important.

Our solution:

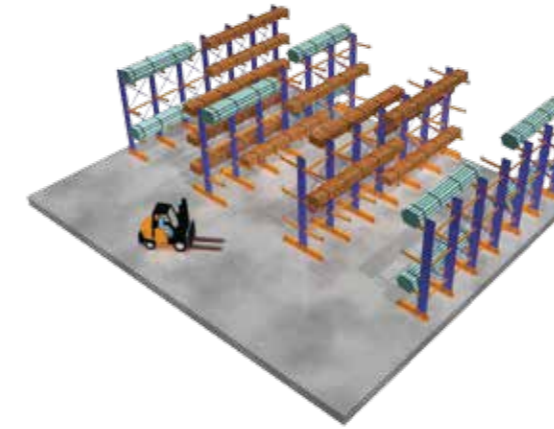
This system's designed for high-volume, easy-access storage. Unique self-centring rails position pallets quickly, easily and safely. Works with conventional forklifts.

Vital statistics:

Average locations used	75%
Immediate accessibility	Up to 100%
Stock rotation	Average
Average floor area by pallet position (sqm)	0.55

Get more from every cubic metre.

Clearspan[®] cantilever racking.



Your need:

You store long, awkward, very heavy items, perhaps outside, which you need quick, direct access to.

Our solution:

Clearspan Cantilever is ideal for very heavy, very long products, such as timber or furniture. With no front uprights to get in your way, it's great for extra-long things that can't be palletised. Galvanised option available for outdoors.

Vital statistics:

Column height (Depth 300mm)	3300, 4200, 4800, 6000mm
Column height (Depth 400mm)	3300, 4800, 6000mm
Base SE & DE	600, 900, 1200mm
Arms	600, 900, 1200mm



The short and the long of it.

warehouse products



Reach the sky.

ASRS Pallet Racking.

Your need:

A highly accurate solution to cater for Automated Storage and Retrieval Systems (ASRS), high-bay warehouses, semi-automatic shuttle systems and mezzanine floors.

Our solution:

The Dexion 808 system can reach 60m in height and is a fully bolted system. Profiles can be manufactured with continuously punched holes (50mm pitch) or manufactured with the holes punched at specifically required positions. In high seismic zones, the project solution is tailor-made to the region to provide customers with added assurance and safety.

Vital statistics:

Average locations used	80%
Immediate accessibility	Up to 100%
Stock rotation	Good
Average floor area by pallet position (sqm)	0.70



Satellite racking.



Your need:

You have a low SKU count and large batches. Stock can be either highly active or static but storage density is a major feature you require. You typically despatch by batch and use either First In, First Out or Last In, First Out.

Our solution:

The Dexion Auto Shuttle offers high-density pallet storage without forklift trucks entering the system. It makes the most of limited space and forklift truck fleets. Dexion Auto Shuttle units deposit and retrieve pallets within the system as required.

Vital statistics:

Average locations used	80%
Immediate accessibility	Up to 100%
Stock rotation	Good
Average floor area by pallet position (sqm)	0.70



No forklifts in storage lanes.



Your racking service and maintenance obligations to ensure standards compliance.

With tougher safety standards and ever increasing work health safety demands, being a warehouse manager has never been tougher. You have a duty of care to comply with legislation to ensure staff safety.

You're not alone, Dexion's national team of dedicated service professionals and inspectors can help.

**OBLIGATION #1
ANNUAL INSPECTIONS.**



Inspection of racking structures to be carried out on a regular basis, at least once every 12 months. Dexion offers onsite rack inspection with on the spot reports.

**OBLIGATION #2
RACK PROTECTION SYSTEMS.**



Rack protection systems and wrap-around guards are required to protect the racking structure. Dexion has a range of protective devices which comply with the standard.

**OBLIGATION #3
SAFE WORKING LOAD SIGNS.**



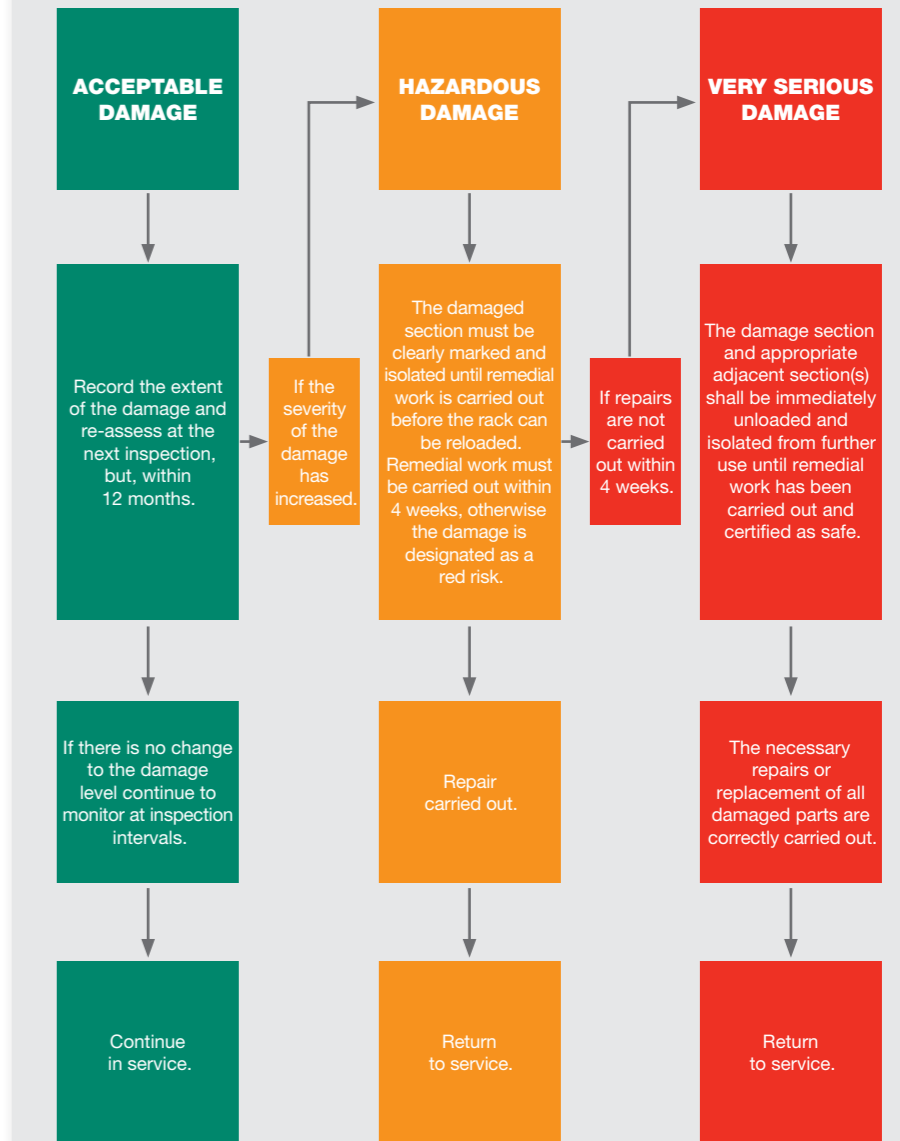
Racking installations shall have one or more safe working load signs in conspicuous locations. Dexion can assess your rack for maximum safe loading limits and provide the signs thereafter.

**OBLIGATION #4
RACK SUPPLIER APPROVED ALTERATIONS.**



Alterations to racking configurations are prohibited without the approval of the racking supplier. Dexion offers a reconfiguration and relocation service.

Damage assessment: AS4084:2012 compliance



warehouse products

Pallet racking accessories.



Pallets support bars for heavier or shorter loads.



Fork entry bars enable safe handling of non-standard sized pallets or goods which are not sitting on a pallet.



Retainers to secure chipboard to beam levels.



Mesh binning for small parts storage.



Mesh decks accommodate the safe handling of non-standard pallet sizes.



Punch deck features a flat 50% open storage platform that provides efficient circulation of air, light and fire sprinkler water.



Safe working load signs indicate maximum safe loading limits. AS4084 compliant.

Dexion Storeganizer.



Your need:

To optimise your racking space for small, slow moving items in a cost-efficient way.

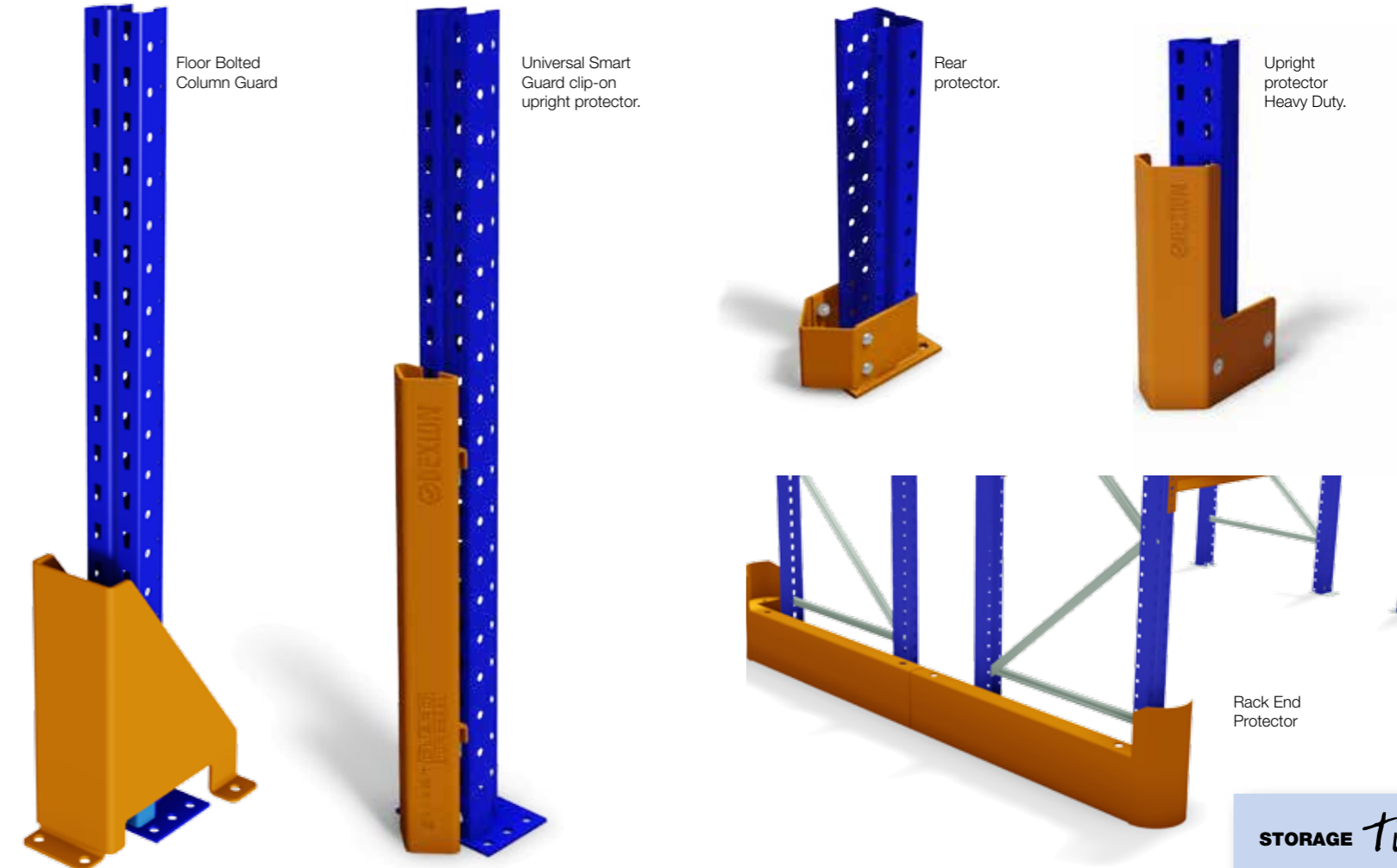
Our solution:

The Dexion Storeganizer is based on a concept of vertically stacked, multi-row high quality pockets that limits the costs per square metre. It's designed to accommodate small items in columns of suspended, easy-to-access vertical pockets, made of flexible, durable coated textile. Although lightweight themselves, these columns can support up to 100 kg as standard, with a 10-year warranty.

Vital statistics:

Load Capacity (per column)	Up to 100kg (Weight is limited by beam capacity)
Colour	Grey (customised options available on request)
Material	High quality industrial textile (pockets), Galvanised steel (frame)
Pallet Racking Bay Size Requirement	2600mm (L) x 2300mm (H) x 840mm (D)
Extra Large Pocket Size Dimensions	W520mm x D500mm x H330mm
Large Pocket Size Dimensions	W370mm x D500mm x H280mm
Medium Pocket Dimensions	W320mm x D320mm x H240mm
Small Pocket Dimensions	W260mm x D320mm x H220mm
Extra Small Pocket Dimensions	W260mm x D260mm x H180mm

Pallet racking protection.



STORAGE Tip

It's more cost-effective to replace a damaged guard than a damaged upright.

Carton Live Storage:

Your need:

You arrange your access on a First In, First Out basis. You need to hold more inventory at the pick face whilst reducing replenishment frequency. You hold a large number of unique items, that are picked in small quantities and are not suited to palletisation.

Our solution:

Carton live storage is a gravity-fed order picking system designed to increase efficiency while decreasing required floor space. It delivers full carton and split carton picking, with low capital outlay and operating costs, and this orderly picking system saves labour. Pickers work in the front aisle while replenishers work in the back. First In, First Out rotation in any lane is ensured. In high-volume situations, a pick-and-put-to light increases speed, efficiency and accuracy.

Vital statistics:

Selecta Flo:

Standard bed depth	2320, 3020mm
Standard bed width	2598, 2750mm
Bed load capacity	200kg per square metre

Roller Flo:

Roller width (mm)	238, 314, 390mm
Standard track length (mm) / overall frame depth (mm)	1946 / 2057, 1996 / 2110
Variable roller pitch	25.4, 50.8, 76.2mm



Pick from the front.

Fill from the back.

Selecta Flo.



Makes light work of heavy loads.

Roller Flo.



Roller Flo provides a robust carton live storage solution. It provides an adaptable alternative to pallet or split case picking, depending on your requirements.

STORAGE Tip

Incorporate pick and put-to-light technology to increase the speed, efficiency and accuracy of pickers.



Taking things to a new level.

Raised storage areas: Customised steel.

Your need:

Flexibility of uninterrupted floor space on both levels to enable you to configure process activity independent of the structure's architecture. For example, you may want to utilise the ground floor as a workshop, storage, manufacturing or packing area.

Our solution:

By creating the raised platform out of customised steel, with a limited number of columns, you achieve uninterrupted space above and below which offers unlimited flexibility for utilisation of space.



Raised storage areas: Rack supported.

Your need:

The goods to be stored are not heavy in nature. You also need the flexibility of knowing the raised storage area is modular and can therefore be easily dismantled and relocated. Typical primary need is a hand-loaded storage facility where slow moving stock is stored on upper levels leaving the ground floor for fast moving stock items.

Our solution:

Utilising your existing racking support structure, create tiered platforms to facilitate picking access at multiple levels. The platforms are constructed from either mesh grated steel or ply flooring. You can also incorporate conveyors for efficient material flow.

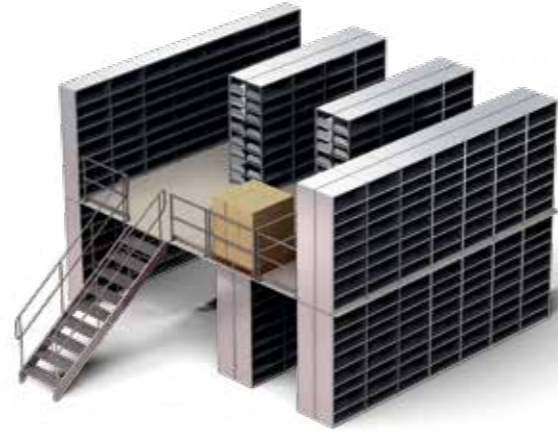


Build on existing foundations.



From little to large.

Raised storage areas: Ultima[®] HI-280.



Your need:

A solution for demanding items or those that require specialised storage. Flexibility is also important, with the ability to expand in the future.

Our solution:

Ultima HI-280 is the solution for items other systems can't handle. It's big on carrying capacity and shelving bay lengths and height. What's more, it's completely boltless and nutless. Ultima HI-280 can be used for everything from high-density, small parts storage through to large scale, multi-tier structures incorporating bridges, loading gates and staircases.

Vital statistics:

Shelf carrying capacity	Up to 380kg*
Shelving bay carrying capacity	Up to 4574kg
Shelving bay length	Up to 2500mm
Shelving bay clear depth	Up to 1000mm
Shelving bay height	Up to 12000mm

*Uniformly Distributed Load. Shelf, beam and bay capacities vary, contact your Dexion Supply Centre representative for specific maximum loads based on your configuration.



With no nuts, bolts or rivets, the system slots together easily. The HI-280 system can be customised to add any features you require for your particular business needs.



Tailor your system with accessories.



Tyre storage.



Lifts can be incorporated into the Ultima HI-280 structure.



Effective high density storage of small parts.

warehouse products



Rolling with the flow.

Conveyors are used in distribution systems to move anything from small cartons up to full pallets quickly from point to point. There are many different types of conveyors available. Dexion applies its many years of experience and expertise to select the right equipment for each application. As part of designing a system, we consider what is being conveyed, its size, shape, condition, weight and the capacity that needs to be moved. Other considerations include allowing for accumulation, a form of buffering to even out peaks and troughs on a conveyor to spread the load. Additionally, other equipment can be integrated including label printer/applicators, weigh scales and carton sealers.

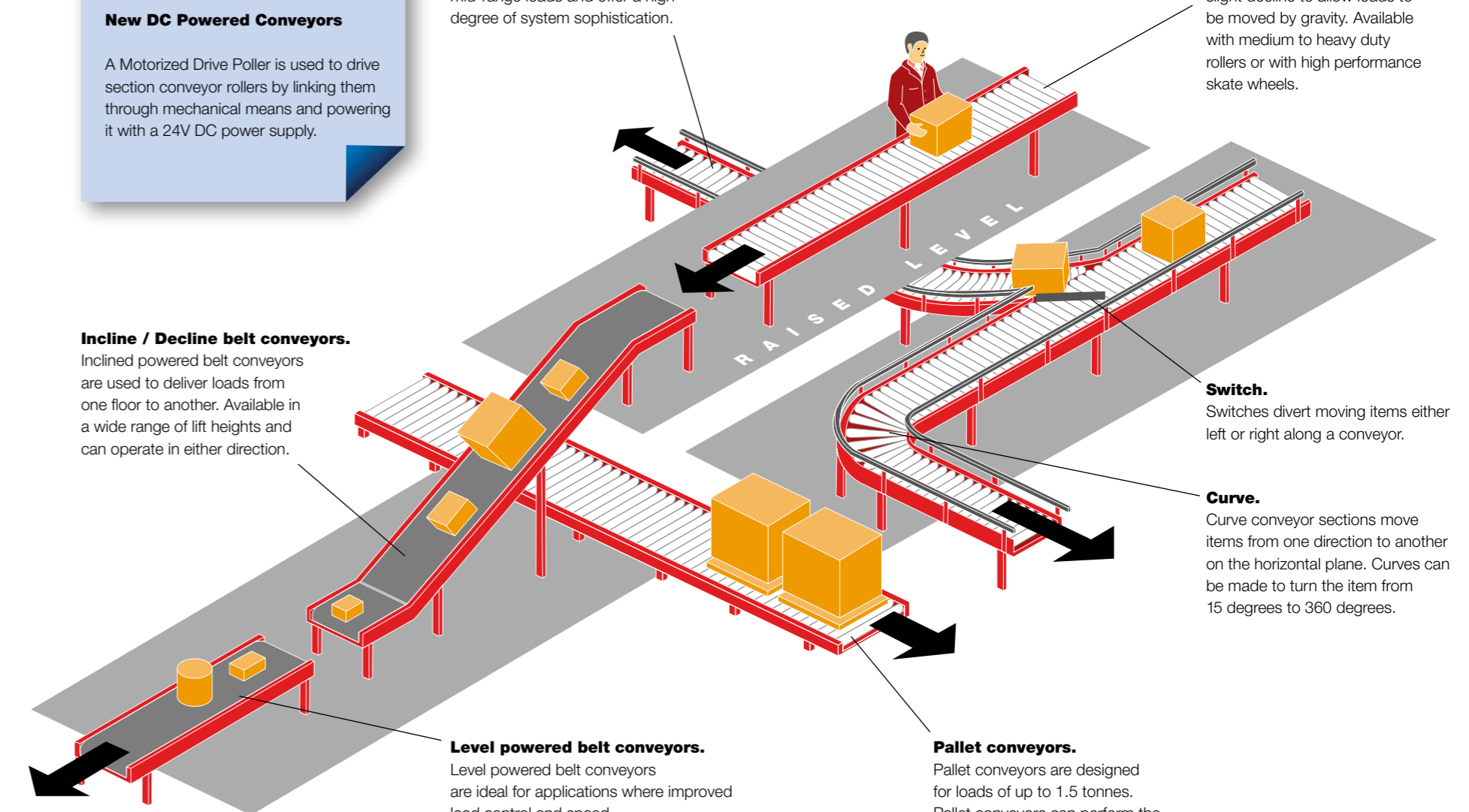
STORAGE Tip

New DC Powered Conveyors

A Motorized Drive Roller is used to drive section conveyor rollers by linking them through mechanical means and powering it with a 24V DC power supply.

Lineshaft conveyors.
Lineshaft conveyors provide the optimum solution for transporting mid-range loads and offer a high degree of system sophistication.

Gravity roller conveyors.
Installed either horizontally for manual movement, or with a slight decline to allow loads to be moved by gravity. Available with medium to heavy duty rollers or with high performance skate wheels.



Incline / Decline belt conveyors.
Inclined powered belt conveyors are used to deliver loads from one floor to another. Available in a wide range of lift heights and can operate in either direction.

Level powered belt conveyors.
Level powered belt conveyors are ideal for applications where improved load control and speed of operation are important.

Pallet conveyors.
Pallet conveyors are designed for loads of up to 1.5 tonnes. Pallet conveyors can perform the simplest of transportation tasks, to multi-destination pallet handling systems.

Switch.
Switches divert moving items either left or right along a conveyor.

Curve.
Curve conveyor sections move items from one direction to another on the horizontal plane. Curves can be made to turn the item from 15 degrees to 360 degrees.



STORAGE Tip
 Accurately and easily dispense carpet and vinyl directly from the carousel by incorporating a Dexion flooring cutter.



Vertical carousels.

Your need:

You require a flexible high density storage solution that will maximise valuable floor space in your warehouse or showroom. You need to increase productivity, operational throughput, picking accuracy and efficiency, while reducing labour costs. You may also require the ability to integrate with your existing WMS and ERP systems. Protecting your inventory in a secure, clean environment whilst ensuring easy and fast retrieval of stored products is essential. The health and safety of your staff is paramount, so your storage solution must be safe, ergonomically designed, and easy to operate.

Our solution:

Dexion has the most extensive and diverse range of mechanised vertical storage carousels on the market. From a stand-alone machine with simple push-button controls; to a fully automated and system integrated solution. Vertical carousels optimise your available floor space by utilising the wasted vertical storage space within your facility. By employing the "Goods to Person" methodology, carousels can eliminate travel time and greatly increase picking rates. If required, vertical carousel's can seamlessly connect to your WMS and/or ERP systems, to provide real-time inventory management. Requiring only a single operator, vertical carousels are simple and safe to operate, and are ergonomically designed to reduce the risk of manual handling and lifting related injuries. A range of additional security options are also available, including; full enclosure/cladding to protect inventory from damage, ageing and theft, and password protection to prevent unauthorised access to stored goods



Carpet carousel.

The carpet carousel is perfectly suited to carpet retailers and wholesalers, 3PL carpet distributors, or any industrial manufacturing process using carpet. It provides an all-in-one storage, display and dispensing solution, specifically engineered for the increased loads, sizes and constraints of the flooring industry. Standard carpet carousel models can store up to 17 rolls (customised models also available).



Textile carousel.

The textile carousel is ideally suited to textile retailers and wholesalers or any industrial manufacturing process using rolled textiles or fabrics. It provides an all-in-one storage, display and dispensing solution for a huge variety of rolled goods. Standard textile carousel models can store up to 32 rolls (customised models also available).



Vinyl carousel.

The vinyl carousel is suited to vinyl retailers and wholesalers, 3PL vinyl distributors, or any industrial manufacturing processes using vinyl. It provides an all-in-one storage, display and dispensing solution, specifically engineered for the increased loads, sizes and constraints of the flooring industry. Standard vinyl carousel models can store up to 40 rolls (customised models also available).

Take a look round our carousel collection.

warehouse products



Tyre carousel.
The tyre carousel is ideal for tyre retailers, wholesalers or distributors, vehicle dealerships and workshops, or any business with internal fleet management requirements. Standard tyre carousel models can support up to 15 tyre storage levels. Customised models are also available, including heavy duty options for industries with larger/heavier inventory, such as airlines or the military.



Wire carousel.
The wire carousel is designed to store, display and dispense, a wide variety of rolled wire, cable and hose products, in an array of different sizes. These carousels are particularly suited to electrical hardware retailers and distributors, electrical manufacturing production lines and industrial cabling workshops. Standard wire carousel models can support up to 13 storage levels, each with a variety of dispensing formats (customised models also available).



Garment carousel.
The garment carousel is a high-density solution for the storage and retrieval of hanging garments in applications ranging from retail showrooms and 'back of store', to warehouses and apparel distribution centres. This carousel is ideal for fashion retailers, wholesalers and distributors, industrial laundrettes, dry cleaners and any business with uniform storage requirements, such as the military or hotel chains. Standard garment carousel models can support up to 9 storage levels (customised models also available).



Shelving carousel.
The shelving carousel offers an extremely flexible storage platform, for just about any storage application. It is ideal for hardware retailers, wholesalers and distributors, or any industrial workshop or manufacturing environment. Standard shelving carousel models can support up to 13 shelf levels (customised models also available). Shelf levels can be configured to suit your individual storage and inventory requirements.



Pan carousel.
The pan carousel is suited to any business requiring secure, high density, storage and retrieval of small to medium parts, at a cost effective price point. Standard pan carousel models can support up to 24 shelf levels (customised models also available). All shelf levels can be sub-divided and configured to suit your individual storage and inventory requirements.



Multi-tower application.
Multi-tower is a modular extension concept that can be applied to the Dexion vertical carousel range (excluding the pan carousel). The multi-tower application allows you to increase the storage capacity of single tower machines by adding additional storage towers to the depth of the original unit. The multi-tower application enables the management of significantly larger inventory volumes within a centralised location.

Make the cut easy.

Flooring cutters.
Dexion's range of flooring cutters have been designed as the perfect dispensing accessories for Dexion carpet and vinyl carousels. The flooring cutters allow a single operator to safely unroll, inspect, measure, cut, re-roll and wrap carpet and vinyl products, directly from the carousel, in a single process. The cutter range includes both manual and motorised models, with a tiered range of equipment options, all of which are designed to easily integrate with the front of a carpet or vinyl carousel. The cutting machines are fitted with enclosed castors for manoeuvrability, but can also be mounted on a floor track to service multiple, in-line carousels. If required, the flooring cutters can also be fitted with a "Trumeasure" system for International weights and measures certification.



Carousel mate manual cutter.
The carousel mate is a non-motorised, entry level, cutting and re-rolling accessory for the carpet and vinyl carousels, which can be easily operated by a single user and does not require electricity to operate. The carousel mate features manually operated, bi-directional cutting and re-rolling devices, and also comes equipped with a built-in mechanical counter for precise product measurements. The space efficient design provides a small working footprint that attaches easily to carousels, and is also easy to store when not in use.



Rack n roll motorised cutter.
The rack n roll is a motorised, medium demand, cutting and re-rolling accessory for the carpet and vinyl carousels, designed for easy operation by a single user. The rack n roll is fitted with a standard mechanical counter for precise product measurements. The user friendly control panel is equipped with simple directional buttons and a safety cut-off switch, plus a security keypad to prevent unauthorised use. Motorised feed rollers allow incremental movement and re-rolling of the product, while the patented, self-sharpening, circular cutting blade provides reliable, clean, straight cuts.



Cut n roll motorised cutter.
The cut n roll is a fully motorised solution, designed for precise, reliable outputs in higher volume applications. This machine is fitted with a highly accurate electronic counter for precise product measurements, and a patented re-roll cradle that virtually eliminates manual handling. The machine is operated from a user friendly electronic control panel, equipped with complete range of control options, and a security keypad to prevent unauthorised use. Built-in motorised feed rollers allow incremental movement and precise alignment of the rolled product. The patented, self-sharpening, circular cutting blade provides a clean, straight cut and is automatically sharpened with every use.



**ADELAIDE
SHELVING**

www.adelaideshelving.com.au