

# Rack Protection - Overview

## SMART GUARD

- *'Clip-on' Steel Upright Protector*
- *Easy installation*
- *Easily replaced if damaged*

Keylock (75mm)

Smart Guard part # 4197

Smart Guard Clips Part # 4196

(2 clips required per Smart Guard)

S8 (50mm)

Smart Guard part # 7263005

Smart Guard Clips Part # 7058401

(2 clips required per Smart Guard)



## COLUMN GUARD

- *Independent of Upright with floor fixing at four points*
- *Front and side protection*
- *Meets Australian Standard AS4084-2012*

400mm High

Column Guard Part #7058440

Floor Anchor Part #FLO1999



## CORNER GUARD

- *Independent of Upright with floor fixing at four points*
- *Most suitable for Rack Ends*
- *Perfect for bays with lower shelves or bays requiring greater access for wider pallets*
- *Corner front and side protection*
- *Meets Australian Standard AS4084-2012*

400mm High

Corner Guard Part #DX0019

Floor Anchor Part #FLO1999



# Rack Protection - Overview cont...

## 'RACK ARMOUR' PLASTIC UPRIGHT PROTECTORS



PART NUMBER	DESCRIPTION	RACK GRADE	UPRIGHT WIDTH (mm)	HEIGHT (mm)
7263030	Front Plastic / Foam Upright Protector	Keylock MK3 & MK5	80	400
7263031	Front Plastic / Foam Upright Protector	Keylock MK3 & MK5	80	600
7263032	Front Plastic / Foam Upright Protector	Keylock MK6, Speedlock MK8	90	400
7263033	Front Plastic / Foam Upright Protector	Keylock MK6, Speedlock MK8	90	600
7263034	Front Plastic / Foam Upright Protector	Keylock MK6, Speedlock MK8	100	600
7263037	Rear Plastic / Foam Upright Protector	Keylock MK6, Speedlock MK8	90	120
7263035	*INSTALLATION TOOL - STD	All Grades	n/a	n/a

*\*One Installation Tool will be supplied for orders over 500 units Total*

## RACK END PROTECTORS

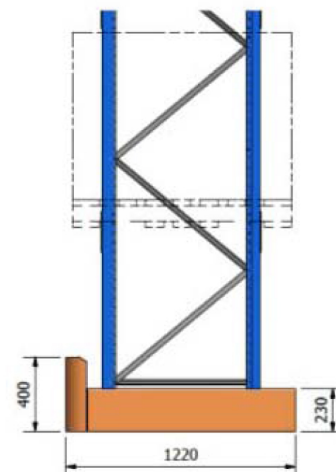
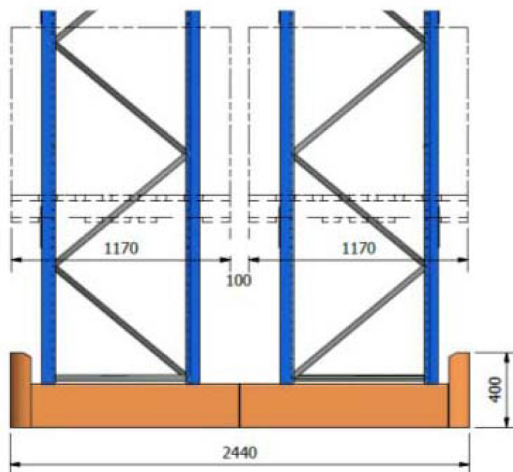
- Independent of Rack structure
- Ultimate side impact protection for Rack Ends

R.E.P. Right Hand Part #7058640

R.E.P. Lett Hand Part #7058641

Heavy Duty Floor Fixing Part #6250

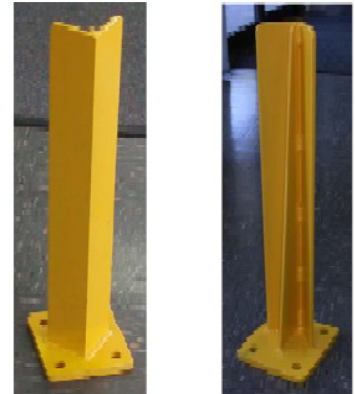
3 Fixings per R.E.P.



# Rack Protection - Overview cont...

## HEAVY DUTY UPRIGHT PROTECTOR 'BOLLARDS'

- Independent of upright with 100mm chemical floor fixings at four points
- 10mm thick heavy duty base
- Central rear spine to absorb impact and to provide impact flexing



## CRASH BARRIERS

- Independent of Rack structure
- Custom made to suit each application
- High visibility, robust long life solution

